



Master's programmes

2017 - 2018





Get the competitive edge

As a leading European university, Linköping University (LiU) welcomes students who are prepared to challenge themselves. We provide a safe and eco-friendly environment, excellent study facilities and a fantastic student experience. We are dedicated to fostering an innovative mindset and an entrepreneurial spirit in our students, giving them the competitive edge in the global market.

We are also demanding and we require critical thinking and the ability to do independent work. For LiU, internationalisation is a quest for quality, for talented and ambitious students from around the globe and for research that makes a difference worldwide.

A handwritten signature in black ink, consisting of a large, stylized 'H' and 'D' followed by a long horizontal line.

Helen Dannetun
Professor of Physics and
Vice-Chancellor of Linköping University

Contents

4 Why study at Linköping University

We innovate
We collaborate
We rank highly
3 LiU innovations
3 companies with LiU roots

6 One university, two cities

7 Under the Swedish flag

8 Alumni stories

10 Master's programmes

Engineering and Computer Sciences
Environmental Studies
Design
Natural Sciences
Education
Social Sciences and Humanities

22 Life on campus

University libraries
Health care offices
Food and "fika"
Happenings and events
IT services
Making friends

24 How to apply

Application procedure
Admission requirements

24 Tuition fees

25 Scholarships

LiU International scholarships
Swedish Institute scholarships

26 Doctoral studies

26 Accommodation



Facts & figures

- **27,000** students
- **4 faculties:** Arts and Sciences, Educational Sciences, Medicine and Health Sciences, Science and Engineering
- **3 campuses:** Campus Valla, University Hospital Campus, Campus Norrköping
- **2 cities:** Linköping & Norrköping
- **Over 20** international master's programmes
- **2,000** international students
- **1,300** doctoral students
- **300** professors



Why study at Linköping University?

We innovate

Since gaining university status in 1975, Linköping University has worked with innovation in education and research. We are renowned for creating degree programmes that give valuable cross-disciplinary knowledge, for example combining medicine and engineering or computer science and statistics. Valuable knowledge for today's and tomorrow's society.

We want our students to take an active role in learning. We aim to stimulate independent and critical thinking by nurturing problem-solving abilities. We seek to implement an innovative educational approach grounded in real-world systems and products.

We have several world-class research environments, for instance in materials science, bio-electronics and information technology. Our graduates and researchers have developed ideas that have led to successful spin-off companies such as Sciss, IFS and Sectra.

We collaborate

Linköping University collaborates with top universities across the globe, both in research and in student exchange. We have more than 500 partner universities, including Stanford University, University of Washington, Nanyang Technological University and LMU Munich. Some of our master's programmes – Adult Learning and Global Change, Experimental and Medical Biosciences, International and European Relations – are given in cooperation with universities in other countries.

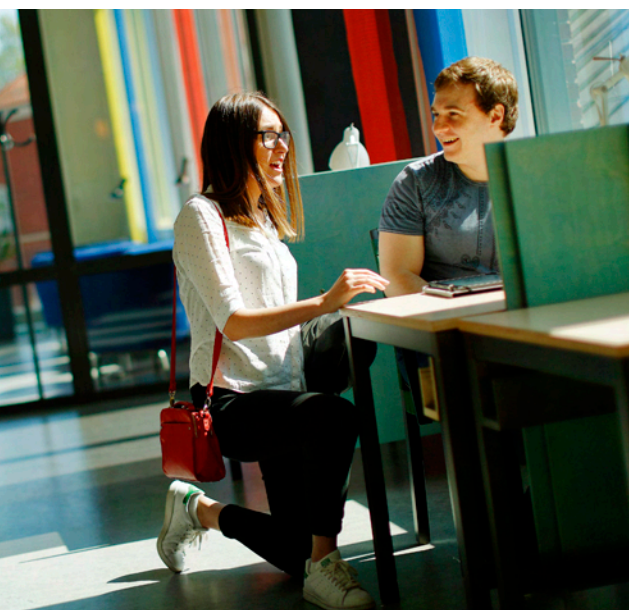
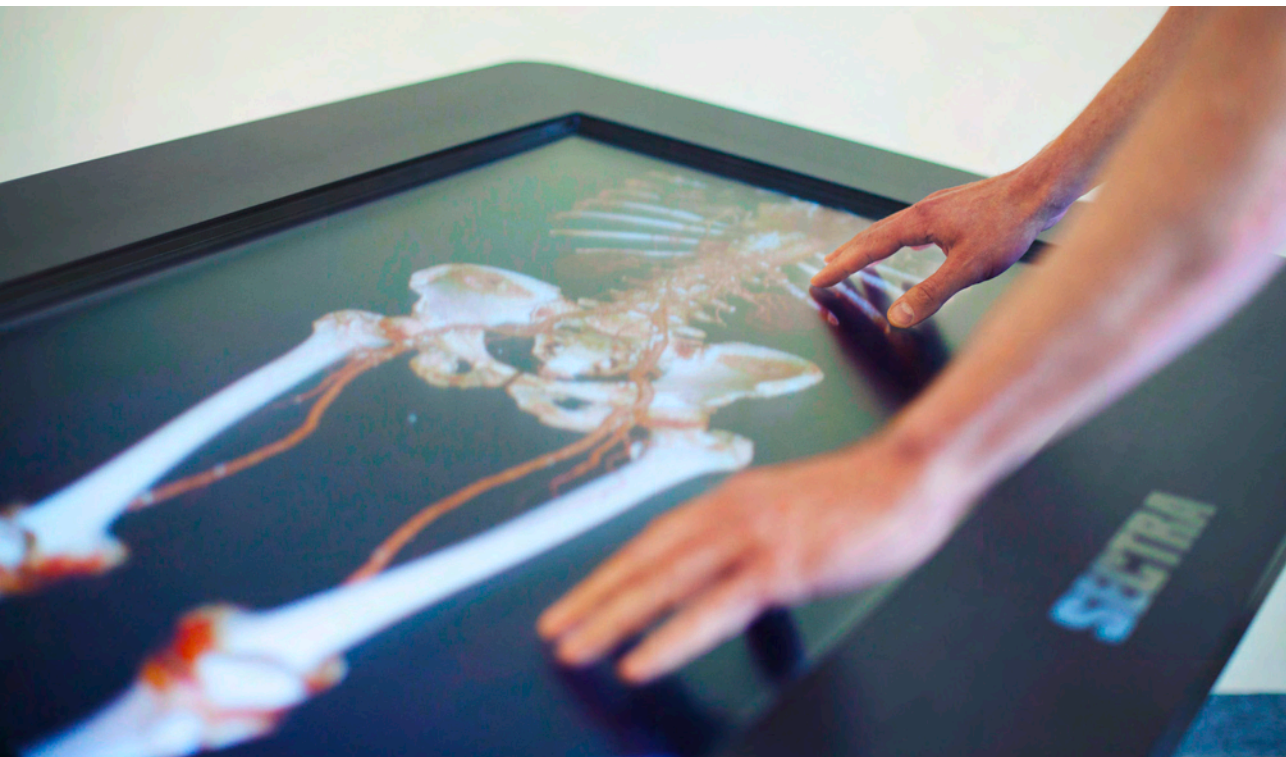
We work closely with many companies. Saab, ABB and the Swedish National Road and Transport Research Institute are just a few of our strategic partners.

We rank highly

The Swedish higher education system as a whole is ranked number five in the world and Sweden currently ranks as number one globally for English proficiency. Among the 20,000 universities in the world Linköping University is in the top 300. We are also among the world's 50 best universities under 50 years.

3 companies with LiU roots

- Sectra - medical IT and secure communication
- IFS - business software
- Sciss - 3D visualisation for planetariums and dome theatre



3 LiU innovations

- The world's first digital hearing aid
- The visualisation table, showing the human body in 3D
- Sensor technology used for instance in Kenya to protect rhinos from poachers



One university, two cities

Linköping and Norrköping, situated in East Sweden, have much to offer in terms of landscape, tourist attractions, entertainment and more. With around 150,000 inhabitants, Linköping is Sweden's fifth largest city. It has a well-developed business sector but retains the charm of a smaller town. Slightly smaller, Norrköping has a lively cultural scene, including lots of live music festivals. Everything is within walking distance and it is very easy to find something fun to do. The cities are in the process of developing into one integrated urban region and the area is not only home to the university but also to several internationally well-known companies, including Saab, Ericsson, Siemens, Holmen Paper, BT Industries and Electrolux.

Under the Swedish flag



Santiago Sanchez from Ecuador studies Biomedical Engineering, he likes the informal relation with the lecturers.

“The relation with the teachers here is more friendly and you call them by their first name. In Ecuador you need to use title and surname, which contributes to a more formal relation. In Sweden, when you have any questions you can just email the professor. I was really surprised to receive an answer just an hour later. In Ecuador it would take at least a few days and then the questions are no longer relevant.”



Sarah Collis from Australia studies Childhood Education. She was surprised by how differently the course was implemented.

“At first it felt a lot easier than it actually was. In Australia we read a lot on our own and then usually sit and listen to the teacher in a very traditional manner. But after studying at LiU for a while it hit me. Together, we as students can share and develop our philosophies and practices and really get to know the why behind the how. So even though I am doing less reading and work by myself I feel like I am owning my education now.”



Adeyemi Adedokun from Nigeria studies Intelligent Transport Systems and Logistics. He thinks the examination system at LiU is generous and forgiving.

“Sweden and Nigeria has very different views on failing. When you write an exam in Nigeria and fail you have to wait another year to write it again. In Sweden you can rewrite the exam

several times.” He appreciates how the university has chosen to empower the students. “Back home in Nigeria, if you don’t do as a teacher says they have the power to fail you. In Sweden, during written exams, the students are anonymous so the lecturer can’t tell who’s who. My time in Sweden has become something more than an education. Living and studying here has given me a whole new perspective on life.”

Alumni stories

Some LiU alumni have embraced academia, while others have chosen a career in industry, either in Sweden or in other countries around the globe.

Throughout the world you can find graduates from Linköping University, building their careers in major companies such as:

BP	Nokia
Electrolux	Oracle
Ericsson	Saab
HP	Siemens Networks
Huawei Technologies	SKF
Ikea	Tetrapak
Intel	Toyota

Guruprakash.V.N, India



Place of residence: Hyderabad, India.

Nationality: Indian.

Work: Senior Quality Assurance Analyst, FactSet Research Systems Inc.

Current working activities: My work involves engaging with two major tasks, one is analysis and sharing the inference on big data samples and second is working with interesting people.

Education at LiU: Master in Industrial Engineering & Management.

Most memorable LiU experience: I have plenty to share; the top most includes late night group studies at the university. Lot of cycling in and around Linköping city, only in summer! Meeting students from around the globe and travelling to a few European countries along with best friends.

Mohammad Mirazul Islam, Bangladesh

Place of residence: Linköping and Stockholm, Sweden.

Nationality: Bangladeshi.

Work: PhD student at Karolinska Institutet.

Current working activities: I am currently doing a PhD at Karolinska Institutet, where I am continuing the research on development of artificial corneas that I started during my master's programme in Linköping University. We have successfully transplanted our artificial corneas into 10 patients in Sweden. The first trial was in patients without microbial attacks but now I am looking at how the material needs to be adapted to work in patients with severe disease conditions. The new improved artificial corneas, made by me, are already in patients and the preliminary result shows improved vision from post-operative condition.



Education at LiU: Master in Medical Biosciences.

Most memorable LiU experience: The Problem Based Learning approach was a new experience. At first I was skeptical. There were lots of open discussions, large groups brainstorming and then summarising the work. It helped in the big perspective; it spread the knowledge in the student group when we shared our own knowledge, which is what working in research is all about.

Anna-Katharina Deinhard, Germany

Place of residence: Bangkok.

Nationality: German.

Work: Climate Finance and Adaptation Expert at UNEP, Bangkok.

Current working activities: Helping countries in the Asia-Pacific region with their accreditation for direct access to the Adaptation Fund. I am also working on building climate resilience of urban systems through ecosystem-based adaptation in Bhutan, Cambodia, Lao PDR and Myanmar.

Education at LiU: Master in Science for Sustainable Development.

Most memorable LiU experience: One of the things I enjoyed the most was to study together



with people from all over the world. Especially on a topic such as sustainable development – it brought together an interesting and unique mix of different perspectives, which challenged my own perspectives and helped me a lot to develop my understanding of global sustainability.

Desi Waluyanti, Indonesia



Place of residence: Greater Jakarta Area, Indonesia.

Nationality: Indonesian.

Work: Officer at Indonesia Transport Ministry.

Current working activities: Working on design of Master plan of road transport and traffic network; meeting people from around the world at International Transport Meeting.

Education at LiU: Master in Intelligent Transport Systems.

Most memorable LiU experience: Everything about LiU was impressive; studying and working in projects with people from other countries; cycling; fika with friends from Sweden and from around the globe; International Day when everyone showcased their home countries' cultures including food, dance, song, traditional clothes etc; and also LiU has the best school environment.

Elena Shabrova, Russia

Place of residence: Ireland.

Nationality: Russian.

Work: Account Strategist at Google Dublin – headquarters for Europe, the Middle East and Africa. SMB Sales at Google.

Current working activities: As an Account Strategist for Google I provide strategic advice and help high-value clients get the best ROI on their advertising investment. I also run product trainings for both Google employees and our advertisers.

Education at LiU: Master in Business Administration – Strategy and Management in International Organisations (SMIO).

Most memorable LiU experience: It is, for sure, the excursion into the Unknown! One of the greatest traditions we have at SMIO is an unforgettable one-day excursion near Rimforsa, south of Linköping. This day is full of outdoor activities, including building a raft to get to the other side of a lake. This is something that everyone definitely remembers!



Master's programmes



Engineering and Computer Sciences

Aeronautical Engineering

Offers a holistic view on aircraft design, including various technologies and disciplines such as: aerodynamics, structure, propulsion, actuation systems and other on-board systems. Linköping is the aviation capital of Sweden, which benefits the programme through connections to industry. After graduation students will be able to work within the aerospace industry, ranging from conceptual aircraft design and aircraft engineering to related fields such as vehicle engineering or wind turbine engineering.

Degree: Master of Science with a major in Aeronautical Engineering

Duration: Two years

Credits: 120

Pace of study: Full-time

Campus: Linköping

Tuition fees: SEK 126,000/academic year (for non-EU citizens)

Biomedical Engineering

Covers fundamental concepts in engineering, biology and medicine to develop innovative approaches and new devices, materials, implants, algorithms, processes and systems for the medical industry.

In the second year students can choose among three areas of specialisation: medical informatics, medical imaging and bio-engineering.

Degree: Master of Science with a major in Biomedical Engineering

Duration: Two years

Credits: 120

Pace of study: Full-time

Campus: Linköping

Tuition fees: SEK 126,000/academic year (for non-EU citizens)



Communication Systems

Focuses on the fundamental principles of system engineering and the design of digital and wireless communication systems. The programme is given in close collaboration with industry. Students get access to an extensive network of contacts and the opportunity to write their thesis in cooperation with Swedish high-tech companies.

Degree: Master of Science with a major in Electrical Engineering

Duration: Two years

Credits: 120

Pace of study: Full-time

Campus: Linköping

Tuition fees: SEK 126,000/academic year (for non-EU citizens)

Computer Science

Builds on the need of computer scientists to master the theoretical foundations of the field and be able to apply and integrate these with other technologies. The programme focuses on the acquisition of skills necessary for positions within modern software technology, such as operating system designers or internet security specialists. Students can also follow a career in research or continue their studies towards a doctoral degree.

Degree: Master of Science with a major in Computer Science

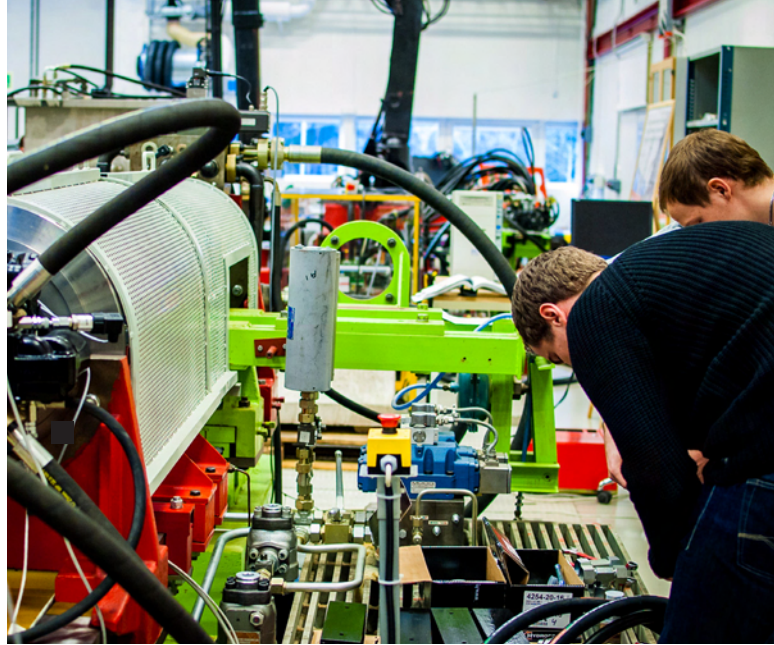
Duration: Two years

Credits: 120

Pace of study: Full-time

Campus: Linköping

Tuition fees: SEK 126,000/academic year (for non-EU citizens)



Electronics Engineering

Focuses on the design of integrated circuits and System-on-Chip in advanced semiconductor technologies. The programme starts with courses in wireless communication systems, digital integrated circuits, digital system design, analogue integrated circuits and an introduction to radio electronics, providing a solid base for future studies.

Degree: Master of Science with a major in Electrical Engineering

Duration: Two years

Credits: 120

Pace of study: Full-time

Campus: Linköping

Tuition fees: SEK 126,000/academic year (for non-EU citizens)

Intelligent Transport Systems and Logistics

Focuses on integrating telecommunications between vehicles and physical road infrastructure to achieve environmentally-sound efficiency and safety. The programme prepares students for careers as managers in industry.

Degree: Master of Science with a major in Transportation Engineering

Duration: Two years

Credits: 120

Pace of study: Full-time

Campus: Norrköping

Tuition fees: SEK 126,000/academic year (for non-EU citizens)

Industrial Engineering and Management

Building on the students' engineering and mathematical background, the programme provides knowledge to identify, analyse, solve and communicate complex interdisciplinary problems in industry. There is a strong focus on integrating engineering and management knowledge and skills. It prepares students for careers as managers in industry.

Degree: Master of Science with a major in Industrial Engineering and Management

Duration: Two years

Credits: 120

Pace of study: Full-time

Campus: Linköping

Tuition fees: SEK 126,000/academic year (for non-EU citizens)

Mechanical Engineering

Deals with the product development cycle from idea and design through management and supply-chain mechanics to the final product. A graduate from the programme will be able to take part in multidisciplinary design processes where technical as well as economical, environmental and sustainability requirements are satisfied.

Degree: Master of Science with a major in Mechanical Engineering

Duration: Two years

Credits: 120

Pace of study: Full-time

Campus: Linköping

Tuition fees: SEK 126,000/academic year (for non-EU citizens)

Statistics and Data Mining

There is a rapidly increasing demand for specialists who are able to exploit the new wealth of information in large and complex databases to improve analysis, prediction and decision making. The programme focuses on modern developments at the intersection of statistics, machine learning, artificial intelligence and database management, providing students with a unique competence in the labour market.

Degree: Master of Science with a major in Statistics

Duration: Two years

Credits: 120

Pace of study: Full-time

Campus: Linköping

Tuition fees: SEK 95,000/academic year (for non-EU citizens)



Design

Design

A new programme offering a studio-based, interdisciplinary approach to design. In collaborations across professions and campuses, students will tackle societal challenges such as food waste and collaborative welfare. Students will learn to navigate complex contexts and create sustainable solutions, developing skills and knowledge in participatory design and co-creative practices. We welcome applicants from different educational backgrounds, with excellent design abilities and a desire to develop design beyond materials and disciplines.

Degree: Master of Science with a major in Design

Duration: Two years

Credits: 120

Pace of study: Full-time

Campus: Linköping/Norrköping

Tuition fees: SEK 126,000/academic year
(for non-EU citizens)

Environmental Studies

Ecology and the Environment

Deals with the management of ecosystems, ecological communities and populations based on a thorough knowledge of ecological concepts and theories. Students will acquire training in practical areas such as: experimental design, data interpretation, ecological fieldwork and theoretical modelling, both in a classroom setting and during hands-on fieldwork.

Degree: Master of Science with a major in Biology

Duration: Two years

Credits: 120

Pace of study: Full-time

Campus: Linköping

Tuition fees: SEK 126,000/academic year
(for non-EU citizens)

Science for Sustainable Development

Aims at providing students with knowledge in environmental change and the challenges of creating a sustainable society for a professional career within research or outside academia. Core courses are designed to broaden the students' perspective on questions and challenges related to sustainable development, and at the same time provide opportunities to deepen knowledge in relevant fields. Students will learn how to use relevant analytical tools for studies of environmental change.

Degree: Master of Science with a major in Environmental Science

Duration: Two years

Credits: 120

Pace of study: Full-time

Campus: Linköping

Tuition fees: SEK 110,000/academic year
(for non-EU citizens)



Natural Sciences

Applied Ethology and Animal Biology

Deals with animal behaviour and biology from an applied perspective, including problems associated with keeping animals in captivity. The programme is taught in collaboration with Kolmården Wildlife Park, one of the largest and most renowned zoos in Sweden. A number of teaching sessions are held at the zoo, where students gain first-hand knowledge from experienced zoologists.

Degree: Master of Science with a major in Biology

Duration: Two years

Credits: 120

Pace of study: Full-time

Campus: Linköping

Tuition fees: SEK 126,000/academic year
(for non-EU citizens)

Experimental and Medical Biosciences

Provides students with frontline knowledge in biomedicine and related subjects. The programme is suited for a scientific career within the broad field of life sciences, with particular emphasis on understanding cellular and molecular mechanisms related to health and disease.

Degree: Master of Medical Science in Medical Biology

Duration: Two years

Credits: 120

Pace of study: Full-time

Campus: Linköping

Tuition fees: SEK 136,000/academic year
(for non-EU citizens)



Materials Science and Nanotechnology

Focuses on the physics of new materials. The programme provides interdisciplinary education and training within electronic materials and devices, surface and nanosciences, theory and modelling of materials, organic/molecular electronics and sensors.

Degree: Master of Science with a major in Applied Physics or Physics

Duration: Two years

Credits: 120

Pace of study: Full-time

Campus: Linköping

Tuition fees: SEK 126,000/academic year (for non-EU citizens)

Organic Synthesis/Medicinal Chemistry

Deals with the design, synthesis and evaluation of low molecular weight organic substances which are biologically active. The programme begins with courses in organic chemistry and organic synthesis, building from the basic concepts to the advanced level, followed by an introduction to medicinal chemistry. Students will acquire the theoretical knowledge and practical experience needed to work with organic synthesis in the pharmaceutical industry.

Degree: Master of Science with a major in Chemistry

Duration: Two years

Credits: 120

Pace of study: Full-time

Campus: Linköping

Tuition fees: SEK 126,000/academic year (for non-EU citizens)



Education

Adult Learning and Global Change

Concentrates on the global tendency for governments to encourage citizens to educate themselves. The programme is offered in collaboration with three other universities across the globe: University of British Columbia in Vancouver, University of Western Cape in Cape Town and Australian Catholic University in Melbourne.

Degree: Master of Arts with a major in Adult Learning

Duration: Two years

Credits: 60

Pace of study: Part-time

Campus: Online distance learning

Tuition fees: SEK 96,000/academic year
(for non-EU citizens)

Outdoor Environmental Education and Outdoor Life

Investigates how outdoor studies can enhance learning and contribute to health, sustainable development and an active citizenship. The programme focuses on experiential learning based on nature, culture and society. Teaching includes outdoor field-related experiences and learning in and via natural and cultural landscapes.

Degree: Master of Social Science with a major in Didactics (with emphasis on Outdoor Education)

Duration: One year

Credits: 60

Pace of study: Full-time

Campus: Linköping

Tuition fees: SEK 110,000/academic year
(for non-EU citizens)



Social Sciences and Humanities

Applied Ethics

Approaches ethical issues in different areas such as politics, medicine and migration, as well as different forms of professional ethics. The aim of the programme is to offer students the opportunity to pursue advanced studies in applied ethics. The programme prepares students for working with applied ethics in professional life (education, politics, health care) or for research at PhD level.

Degree: Master of Arts with a major in Applied Ethics

Duration: One year

Credits: 60

Pace of study: Full-time

Campus: Linköping

Tuition fees: SEK 80,000/academic year
(for non-EU citizens)

Business Administration - Strategy and Management in International Organisations

Aims to equip future leaders with good judgement and ability to make well-balanced decisions. The programme combines fundamental academic knowledge (thinking and reasoning) and experiential knowledge (skills) to prepare students to go beyond applying known solutions to known problems. Through the international focus of courses and the diversity in the classroom, students are well-prepared for working in international organisations.

Degree: Master of Science with a major in Business Administration

Duration: Two years

Credits: 120

Pace of study: Full-time

Campus: Linköping

Tuition fees: SEK 95,000/academic year
(for non-EU citizens)

Child Studies

Challenges conventional views on children and childhood by applying a child perspective. Students will learn to critically scrutinise, analyse and discuss political, cultural and scientific statements and assertions about children and childhood. The programme prepares students for professional work in governmental and nongovernmental organisations that deal with children, young people and their living conditions, as well as for research related to child and childhood studies.

Degree: Master of Social Science with a major in Child Studies

Duration: One/two years

Credits: 60/120

Pace of study: Full-time

Campus: Online distance learning with periods of instruction on campus.

Tuition fees: SEK 80,000/academic year (for non-EU citizens)

Ethnic and Migration Studies

Addressing some of the most challenging issues in today's world, this programme relates ethnicity and migration to global economic and cultural change, and to systems of domination and movements of resistance. Students learn to analyse the causes of migration, and consequences for emerging formations of race, gender, labour, citizenship, healthcare, welfare and culture. The programme prepares for positions in local, national and international organisations, administration, business, government, media and the cultural sector, as well as for further postgraduate studies.

Degree: Master of Arts with a major in Ethnic and Migration Studies

Duration: Two years

Credits: 120

Pace of study: Full-time

Campus: Norrköping

Tuition fees: SEK 80,000/academic year (for non-EU citizens)

Gender Studies - Intersectionality and Change

Prepares students to act as agents for change, to challenge existing norms and structures in education, organisations, media and politics. The programme focuses on intersectional gender – gender in interplay with other social categorisation and power differentials such as: ethnicity, class, nationality, sexuality, age, (dis)ability etc. Students will be prepared for working in different organisations, for example within media, communication, education and politics, as well as for research at PhD level.

Degree: Master of Social Science with a major in Gender Studies, specialisation Intersectionality and Change

Duration: One/two years

Credits: 60/120

Pace of study: Full-time

Campus: Online distance learning with periods of instruction on campus.

Tuition fees: SEK 80,000/academic year (for non-EU citizens)



International and European Relations

Focuses on European relations in the context of international society and global governance, with a special focus on Europe's role in world affairs. The curriculum consists of topics ranging from international law and security to European institutions and Europe's external relations, theories of international relations and organisation, contemporary issues of international governance, and research design and methodology.

Degree: Master of Social Science with a major in Political Science, specialisation International and European Relations

Duration: Two years

Credits: 120

Pace of study: Full-time

Campus: Linköping

Tuition fees: SEK 80,000/academic year (for non-EU citizens)



Life on campus

University libraries

The Linköping University libraries offer access to a wide range of resources, both online and physical, such as books, journals and international databases. Students can also request books from other libraries across Sweden. The libraries are equipped with computer terminals.

Health care offices

Health care offices are available in several locations on the LiU campuses, with nurses, counsellors and welfare officers. Support for mental health issues is also available. All services are free of charge.

Food and “fika”

A restaurant or coffee shop is always nearby. You will soon learn the Swedish tradition of “fika”, which means a coffee or tea break usually with a piece of cake or muffin. Lunch rooms at the university are equipped with microwave ovens and ready to use for those who bring their own food.

Happenings and events

Life at LiU is very rich when it comes to events organised especially for students. At festivals, races, parties and outings you will be able to socialise not only with LiU students but also with students from other Swedish universities.



IT services

Wireless internet is available everywhere on campus. In addition, public computer rooms are available in many places on campus, some of these 24 hours a day. All our students get a LiU ID and receive access to the LiU learning platform Lisam.

Making friends

Meeting people and making friends is an important part of your university experience. Don't wait for an invitation, make the first move – talk to your roommate, or neighbours in your accommodation, and try to find common interests. With nearly 100 student associations on campus you will most probably find a group that shares your interests: music, film, sports, religion,

photography, science, politics, you name it! The most popular associations among international students are:

- International Student Association – arranges social and cultural activities such as the annual International Day.
- Erasmus Student Network – organises parties, dinners, sport events, outdoor trips and many other events where international students can mingle with Swedish students.
- Association for International Visitors – helps international students and researchers meet Swedish families and take part in cultural programmes and outings.



How to apply

Application procedure

The application period for programmes starting in autumn 2017 is **mid-October 2016 – 15 January 2017**. Applying for a master's programme can take some time, so we recommend preparing well in advance. The application must be made online, through the national application service: www.universityadmissions.se

Admission requirements

- A bachelor's degree from an internationally recognised university
- Proof of English language skills, e.g. TOEFL, IELTS
- The specific requirements stated for each master's programme

For detailed information on application and admission go to:

www.liu.se/master

Tuition fees

Citizens from countries outside the EU/EEA and Switzerland must pay tuition fees for higher education in Sweden. Exceptions might apply. For detailed information please check www.universityadmissions.se. Master's studies for citizens of EU/EEA countries and Switzerland are free of charge.

Generally, tuition fees at Linköping University are between SEK 80,000 and 136,000 per academic year.

Tuition fees at Linköping University include the following benefits:

- Swedish language courses for beginners
- The Swedish state's insurance FAS+, including accident and property cover
- An accommodation offer

Scholarships

LiU International scholarships

Every year Linköping University offers scholarships to new students with excellent academic results, representing a tuition fee waiver of 25 – 100%. In order to qualify for a LiU International Scholarship you need to:

- Apply for a master's programme in time – before 15 January
- Choose the programme at Linköping University as your first priority (ranked as no. 1 out of 4)
- Apply for a LiU International Scholarship on our website

Only admitted students will be considered for the scholarship. For more information go to:

www.liu.se/scholarships

Swedish Institute scholarships

The Swedish Institute offers a variety of scholarships depending on the level of studies, the country where you come from and the purpose of your studies. Read more at:

www.studyinsweden.se



Here is how to apply:

- Create an account on www.universityadmissions.se
- Choose the programme of your interest.
- Submit your online application.
- Pay the application fee, if required, or submit documentation to prove your status as a non-payer.
- Check the information about Master's Documentation Requirements on

www.universityadmissions.se and make sure that your documents follow the standards.

- Submit all documentation. Documents can either be sent to the address:
**University Admissions in Sweden
FE 20102
SE-839 87 Östersund, Sweden**
- Or, depending on the country you are from, you may be able to upload a scanned copy of your original documents on www.universityadmissions.se



Doctoral studies

Doctoral studies at Linköping University are free of charge and cover many disciplinary areas. Doctoral positions become available throughout the year and in most cases are remunerated. General entry requirements are:

- A second level degree or
- At least 240 credits of a completed course, of which 60 credits at second level, or
- Equivalent level of knowledge acquired in Sweden or abroad.

For more information on doctoral studies go to:

www.liu.se/education

Accommodation

Arranging housing in Linköping or Norrköping is something to think of as soon as you have been admitted to the university. You should register with different housing companies in order to gather queue points. Fee-paying students have guaranteed accommodation. For more information on how to search for housing go to:

www.liu.se/accommodation

Warning!

You will not spend all your time studying at the university and Sweden is an exceptionally beautiful country with open-minded people. And they all speak English! It's also a safe and clean country with high living standards.

After spending some time here, you may not wish to leave. Sweden offers a stimulating environment where ideas run free and innovation is the leading word. Openness and respect for others, freedom of speech and a high technological standard have turned the country into a home for creativity.

You have been informed and warned. Should you fall in love with Sweden, it is entirely at your own risk. We take no responsibility.

www.liu.se/master

Contact us

studyinfo@liu.se

+46 (0)13 28 28 87

www.liu.se/master

www.facebook.com/mastersatliu

<http://weibo.com/linkopinguniversity>

Production: Published by the Communications and Marketing Division at Linköping University, Sweden, August 2016

Design: Linkin | Photography: David Einar, Thor Balkhed, Peter Holgersson, Hanna Söderquist, Anna Nielsen, David Holmström

Copies: 4,500 | All the information in Master's Programmes is, to the best of our knowledge, correct at the time of printing (August 2016)

